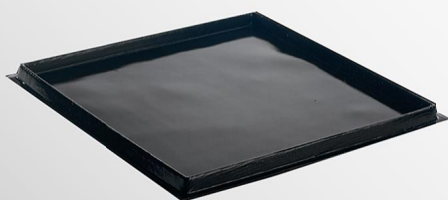
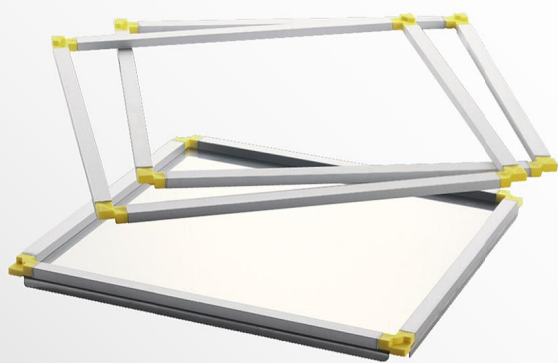


# NOVACHOC

*La technologie au service de la tradition*

## GUITARE ET ACCESSOIRES



Parc d'Activité des Nations  
10 rue de l'Europe  
F- 67230 Benfeld  
Tél. 33(0)3 88 74 09 28  
Fax 33(0)3 88 74 47 98

[www.novachoc.fr](http://www.novachoc.fr)



# GUITAR & ACCESSORIES SPECIFICATIONS

## Guitar cutter

Allows you to cut evenly candies, chocolates, biscuits ....

- ~ Praline substance slab of 360 x 360 mm
- ~ 4 cutting frames : 15, 22.5, 30 & 37.5 mm
- ~ The support block (base) is anodized aluminum, all other parts are stainless steel.

## Accessories

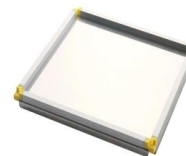
### Guitar cutter table

- ~ Stainless steel worktop 540 x 680 mm - height 850 mm  
with 2 drop- down shelves 350 x 780 mm  
ie a total area of 1240 x 780 mm
- ~ 2 castor wheels with brake for easy movement
- ~ 2 adjustable feet for stability
- ~ 4 rails for storing cutting arm
- ~ one storage drawer (guitar strings, etc ...)
- ~ 1 shelve at the bottom for storing guitar



### Stackable frame

- ~ dimensions 350 x 350 mm - height 10 or 15 mm  
Simplicity, regularity, saving time



### Flexipat

- ~ dimensions 350 x 350 mm - height 16 mm

The Flexipat allows, through its edges, to spread out or to flow very quickly all preparation types with a constant thickness.

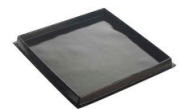
Thus cookings and deep freezing will always regular.

Demolding is not a problem thanks to its flexibility and its anti-adhesion.

Its upkeep is very easy :

just dip it into the soapy water and clean with a sponge.

To dry, you can put it in oven 2-3 minutes at 100 ° C.



*Together, make your dream reality*

